

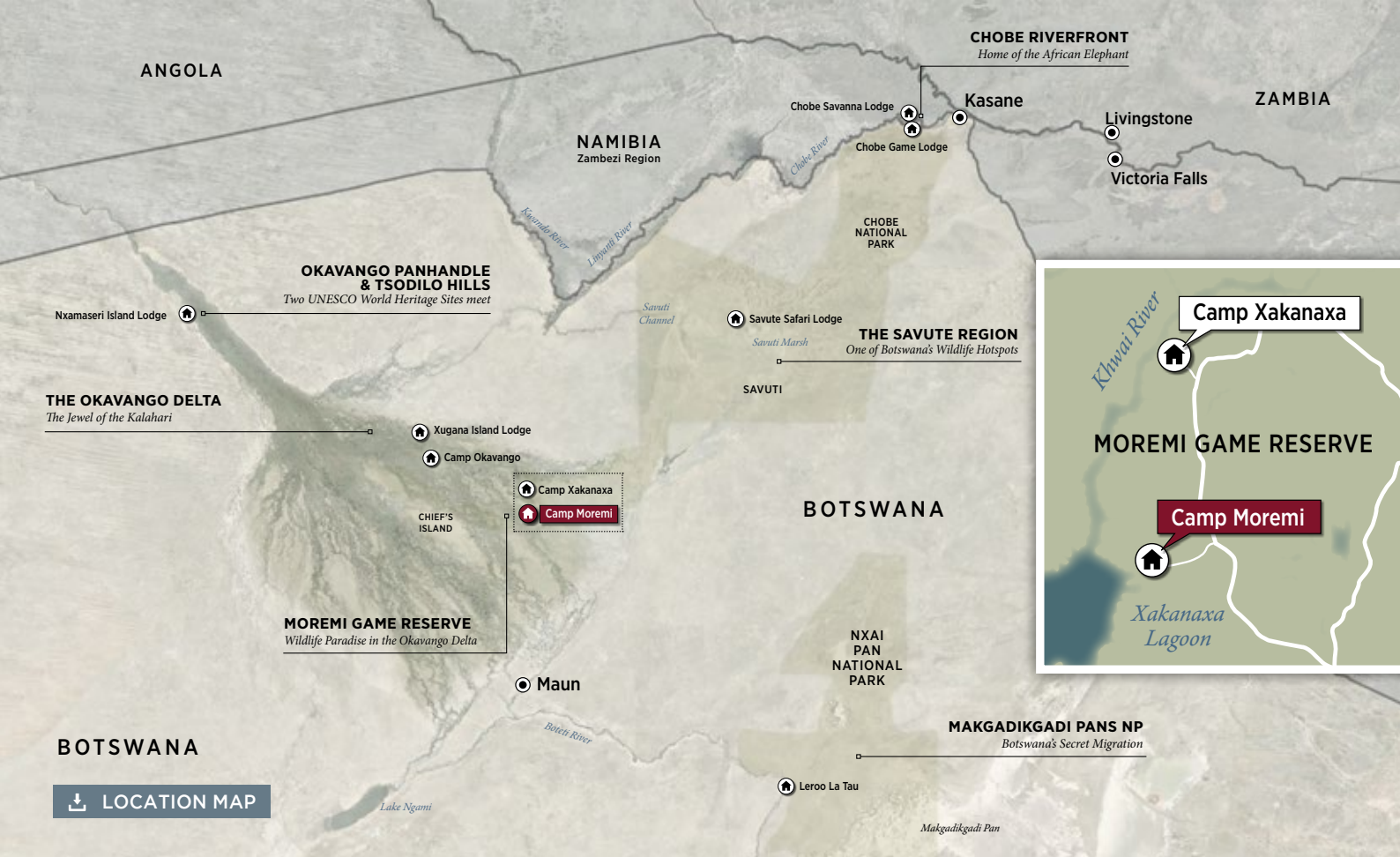


# CAMP MOREMI

*Moremi Game Reserve, Okavango Delta*







*For the classic African safari experience, look no further than Camp Moremi in Botswana's world-renowned Moremi Game Reserve. Camp Moremi is situated on the edge of the Xakanaxa Lagoon in an area well known for its spectacular game-viewing opportunities.*







## THE CAMP

### FACILITIES

<b>ROOMS</b>	11 Luxury Tents & 1 Family Tent (2 en-suite bedrooms) accommodating a maximum of 24 guests.
<b>PILOT/GUIDE</b>	1 x Pilot/Guide Tent (not same standard as guest rooms).
<b>RATES</b>	Fully inclusive of all meals, scheduled safari activities, local drinks (including alcoholic drinks, excluding premium brands) and park entrance fees
<b>DINING</b>	Various indoor and outdoor dining locations.
<b>CAMP FIRE</b>	Open air fire deck in front of camp connected to the main area via a raised boardwalk.
<b>SWIMMING POOL</b>	On a separate deck with easy access from the main area.
<b>BAR</b>	Fully stocked self service bar.
<b>CURIO SHOP</b>	Accepts cash and credit card payments.
<b>LAUNDRY</b>	Daily, inclusive laundry service available.
<b>WATER</b>	Reverse osmosis water treatment plant supplies drinking water (bottled water on request).
<b>ELECTRICITY</b>	Operates on AC 220V generator power during the day and evening. The generator is switched off at night and inverted 12-volt DC lighting provides room and bathroom illumination overnight. 220V AC plug's available in guest rooms.
<b>WI-FI</b>	Connection to Wi-Fi is available in the rooms only. Wi-Fi is via remote satellite link up and constant connectivity is not guaranteed.
<b>TELEPHONE</b>	No telephone communication available. The lodge has a satellite phone and radio for emergencies.
<b>CHILDREN</b>	Children from 6 years and older. See Desert & Delta Safaris child policy for more information.



CAMP IMAGES







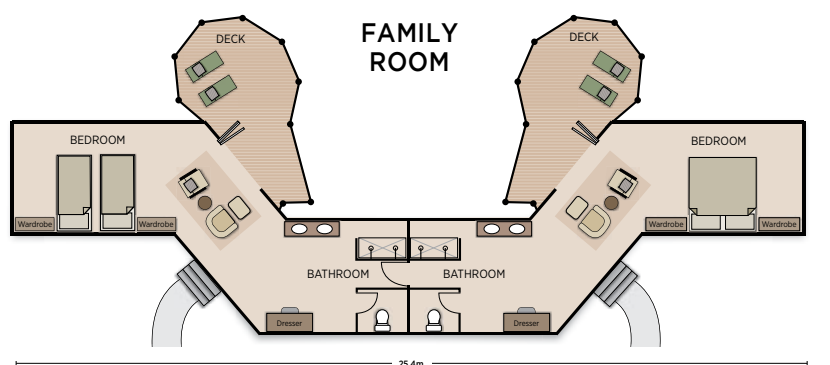
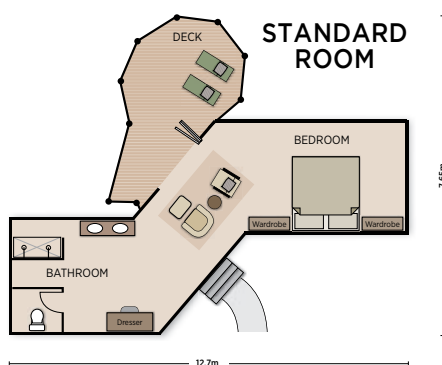
## ACCOMMODATION

Guests will enjoy the luxurious seclusion of classic-styled safari tents, each one set on a raised teak deck, featuring an en-suite bathroom. Accommodating a maximum of 24 guests, Camp Moremi ensures exclusivity and privacy in a tranquil environment.



 [CAMP IMAGES](#)  [PLANS](#)

ROOM FACILITIES	
<b>RAISED DECKS</b>	Each tent is on a raised wooden platform.
<b>PRIVATE VIEWING DECK</b>	Enjoy the views from the comfort of your private room deck.
<b>EN-SUITE BATHROOM</b>	En-suite showers, hand basin and toilet facilities.
<b>FANS</b>	Fans are available in all rooms - there is no air-conditioning in the rooms.
<b>POWER</b>	220V multi adaptor plugs for charging photographic equipment.
<b>SAFE</b>	A small pass-code protected safe for storing valuables.
<b>FLASHLIGHT</b>	For use in the rooms at night.
<b>UMBRELLA</b>	In case of rain.
<b>AIR HORN</b>	For use in case of an emergency.
<b>HAIRDRYER</b>	A small hairdryer is available in each room.
<b>BATHROOM AMENITIES</b>	A range of bathroom amenities including bio-degradable soaps, shower gels etc.
<b>TEA &amp; COFFEE FACILITIES</b>	A small kettle with tea and coffee available.








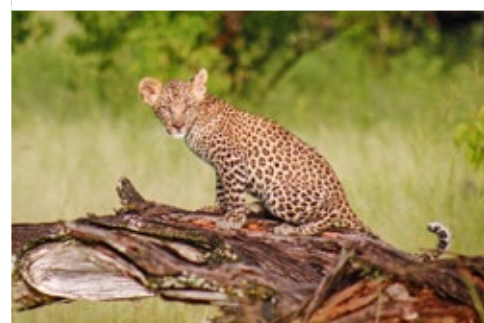


## ACTIVITIES

*Camp Moremi offers a range of activities focused on exploring the uniqueness of the Moremi Game Reserve.*

	<b>GAME DRIVES</b>	Morning and afternoon game drives to explore the many different ecosystems that the Moremi Game Reserve has to offer.
	<b>MOTORISED BOAT SAFARIS</b>	Explore the Xakanaxa Lagoon and its surrounding channels by boat for a chance to enjoy the picturesque waters of the Okavango Delta, in hard-bottom aluminum boats. The boats are equipped with comfortable seats, a foldaway canvas roof and life jackets.
	<b>BIRD WATCHING</b>	The majestic Fish Eagle and vivid Malachite Kingfisher are frequently seen and even the rare Pel's Fishing Owl makes an occasional appearance, to the delight of guides and guests alike.

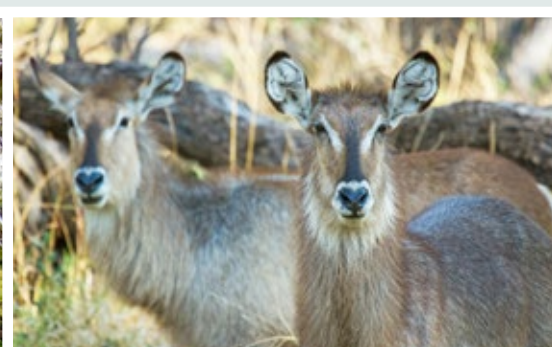
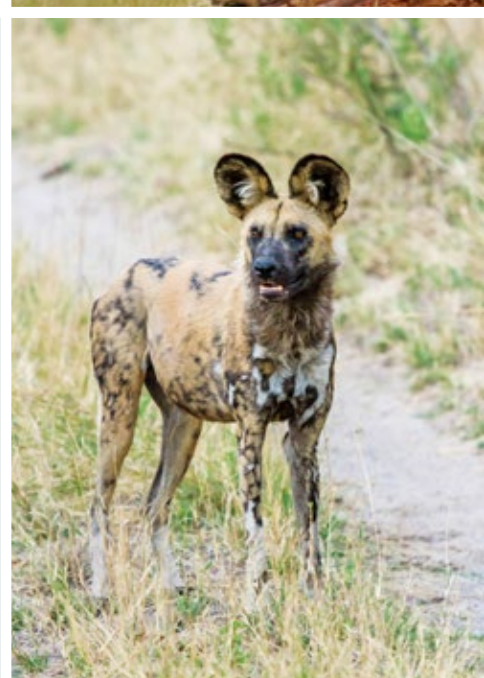
 EXPERIENCE IMAGES



## TYPICAL DAY ON SAFARI

*Please note the below suggested daily program is flexible based on the guests interests, travel times and availability of activities.*

WINTER TIMES	SUMMER TIMES	ACTIVITY
05:30	05:00	Early morning wake-up call.
06:00	05:30	Light continental breakfast served in the dining area.
06:30	06:00	Leave for morning activity, (approximately 3 - 4 hours).
11:30	11:00	Brunch is served at the dining area.
SIESTA TIME		Relax and enjoy the lodge facilities and surroundings.
15:00	15:30	Afternoon tea is served on the open air patio.
15:30	16:00	Depart for afternoon activity (approximately 3 hours).
18:30	19:00	Arrive back at the lodge.
19:30	20:00	Dinner is served at the dining area.





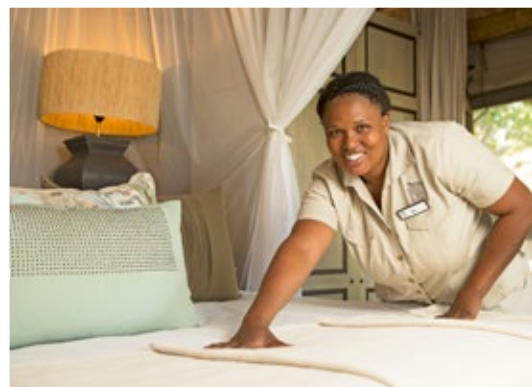


## ACCESS TO CAMP MOREMI

*Camp Moremi is accessed by light aircraft transfer or 140kms from Maun on sandy roads suitable for 4WD vehicles only, approximately a four hours' drive. The Xakanaxa airstrip is owned by Desert and Delta Safaris, a Chobe Holdings Company. Flights to and from Camp Moremi are scheduled based on the travellers itinerary. Once at the airstrip, there is a road transfer of approximately 25 minutes to camp.*

### AIRSTRIIP DETAILS

STRIP GPS CO-ORDINATES	S19° 11' 19.96 E023° 24' 30.48
CAMP GPS CO-ORDINATES	S19° 12' 51.85 E023° 25' 56.0
LENGTH	900m
LICENSE	CAAB Licensed Class B airstrip accommodating aircrafts up to MAUW 5700kg's (Cessna Caravan).
PRIVATE CHARTERS	Prior consent from Desert & Delta Safaris is required before landing private aircraft on the airstrip.



Maun

### ESTIMATED FLIGHT TIMES Between Camps & Airports

25	Camp Okavango						
30	5	Xugana Island Lodge					
20	10	10	Camp Moremi / Camp Xakanaxa				
40	30	25	25	Savute Safari Lodge			
30	45	45	40	50	Leroo La Tau		
60	35	35	45	60	90	Nxamaseri Island Lodge	
70	60	60	55	30	65	95	Kasane

PLEASE NOTE: Drone use is strictly prohibited at Camp Moremi and inside the Moremi Game Reserve, in accordance with National Park laws of Botswana.



*Empowering Botswana Through Tourism*

#### RESERVATIONS OFFICE

TELEPHONE [+267] 680 1494  
E-MAIL [info@desertdelta.com](mailto:info@desertdelta.com)

View Desert & Delta Safaris Video

#### MARKETING OFFICE

TELEPHONE [+267] 686 1559  
E-MAIL [marketing@desertdelta.com](mailto:marketing@desertdelta.com)  
ADDRESS Private Bag 310,  
Maun, Botswana

[www.desertdelta.com](http://www.desertdelta.com)

NOVEMBER 2021